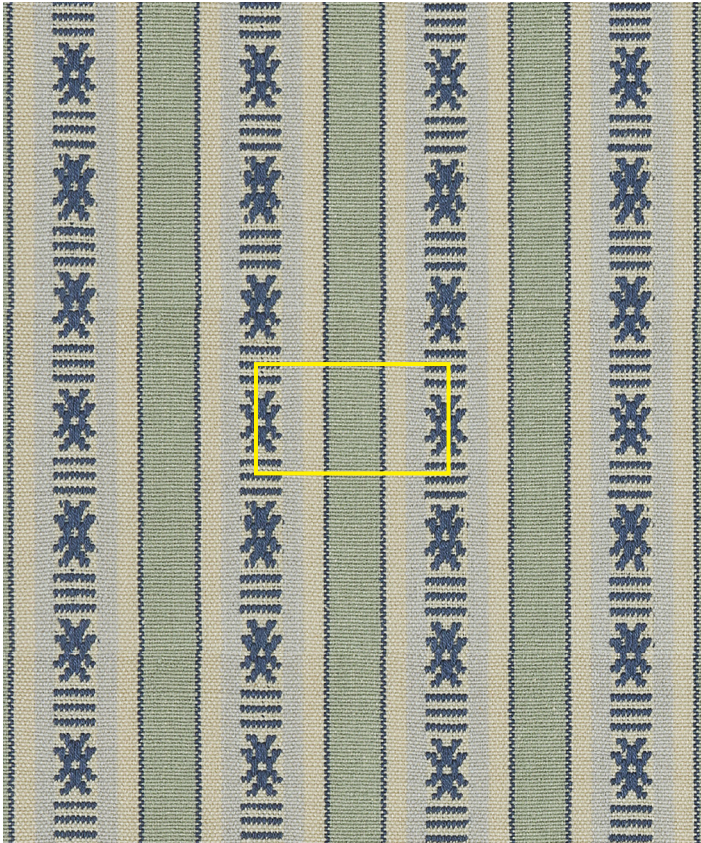


namay samay

Hor Seku Willow | HS-09

Bhutanese style supplementary warp pattern bands (referred to as hor) woven on a frame loom in Bengal.



Design Hor Seku

Colour Willow

Code HS-09

Composition 100% Silk

Width 123cm / 48.5in

Repeat 6cm (h) 3.5cm (v)
2.5in (h) 1.5in (v)

Weight 320g/sqm

Notes
.....
.....
.....



Hor Seku Willow | HS-09

www.namaysamay.com

